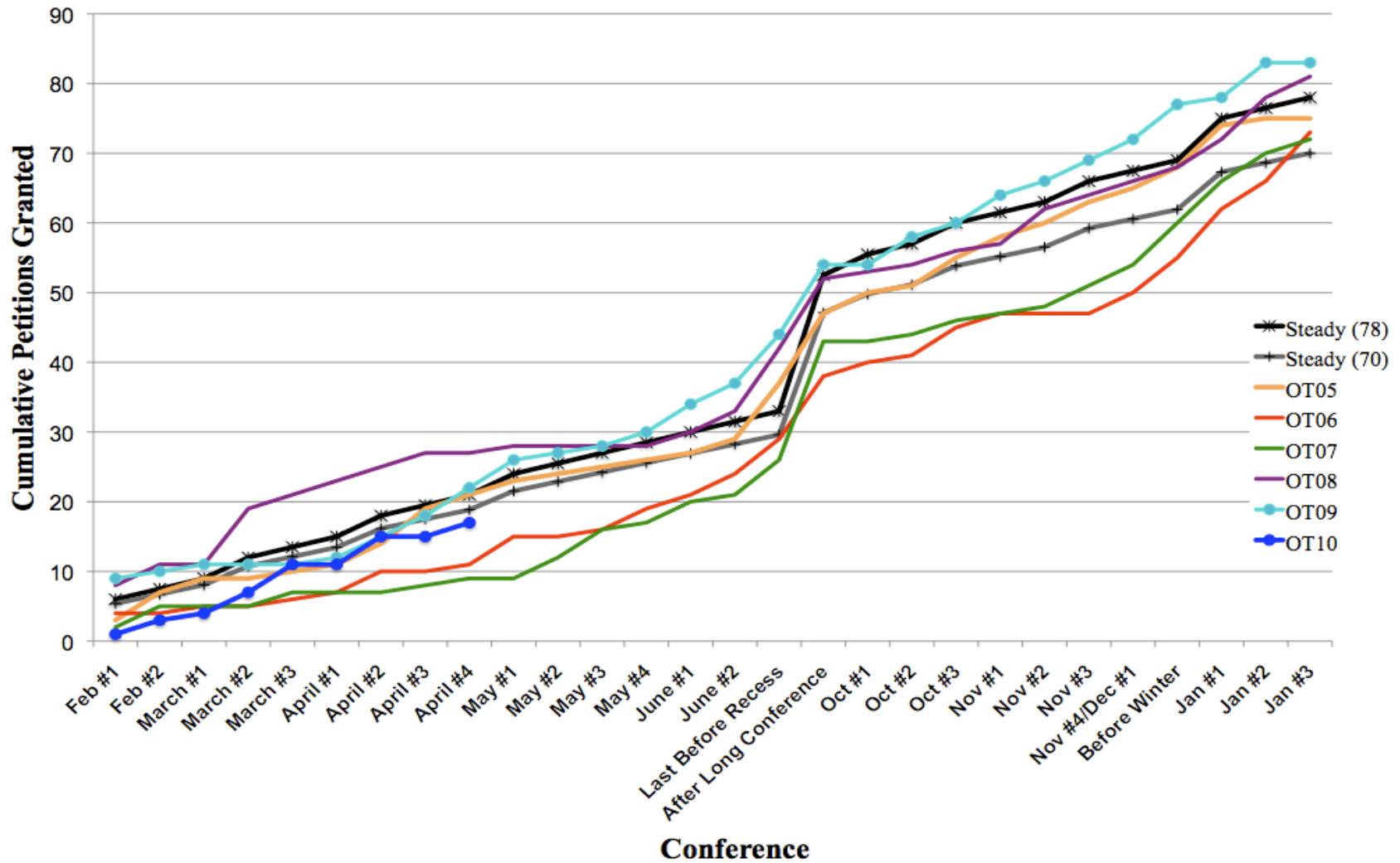


Grants Per Conference

The chart below represents the gradual filling of the docket for each of the last five Terms, broken down by the number of cases granted after each conference. The two “steady” lines represent the grants the Court would need at a given conference, if on a steady pace, to docket the number of cases in parentheses by the end of the Term.



†The one grant depicted for OT10 at the first February conference was granted at the last conference in January 2010. There were no new grants that day in February.